

METAVERSE et RADIOLOGIE INTERVENTIONNELLE



Tom Boeken
tom.boeken@aphp.fr



HeKA team

Digital health research for a learning health system

META- (transcending)
VERSE (universe)
1992



metaverse[Title]



Search

[Advanced](#) [Create alert](#) [Create RSS](#)

[User Guide](#)

Save

Email

Send to

Sort by:

Best match



Display options



RESULTS BY YEAR

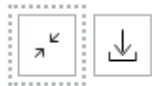
257 results



Page

1

of 2



FORBES > TECH

Facebook Buys Oculus, Virtual Reality Gaming Startup, For \$2 Billion

Brian Solomon Former Staff



Mar 25, 2014, 05:43pm EDT



Meta

Introducing Meta: A Social Technology Company

October 28, 2021

Meta's focus will be to bring the metaverse to life and help people **connect**, find communities and grow businesses.



is metaverse a hype or a real thing?



The metaverse is definitely a real concept, but whether it lives up to the hype remains to be seen. It's essentially a collective virtual shared space that is created by the convergence of physical and virtual reality. Companies and tech enthusiasts are investing heavily in its development, but there's still a long way to go before it becomes the fully immersive, interconnected digital universe that some envision. So, it's a bit of both—real potential, but also surrounded by a fair amount of hype.





is metaverse a hype or a real thing?



The metaverse is definitely a real concept, but whether it lives up to the hype remains to be



collective virtual shared space

development, but there's still a long way to go before it becomes the fully immersive, interconnected digital universe that some envision. So, it's a bit of both—real potential, but also surrounded by a fair amount of hype.

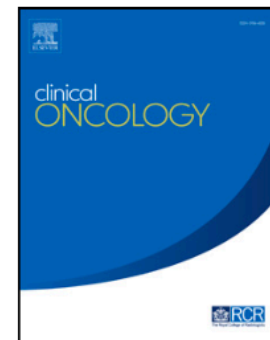


ELSEVIER

Contents lists available at [ScienceDirect](#)

Clinical Oncology

journal homepage: www.clinicaloncologyonline.net



Editorial

The Metaverse and Oncology

A. McWilliam^{*†}, P. Scarfe[‡]

^{*} Division of Cancer Science, Faculty of Biology, *Medicine, Health*, University of Manchester, Manchester, UK

[†] *The Christie NHS Foundation Trust, Manchester, UK*

[‡] Vision and Haptics Laboratory, School of Psychology and Clinical Language Sciences, University of Reading, Reading, UK



CYBERPSYCHOLOGY, BEHAVIOR, AND SOCIAL NETWORKING
Volume 25, Number 8, 2022
© Mary Ann Liebert, Inc.
DOI: 10.1089/cyber.2022.29253.editorial

EDITORIAL

Open camera or QR reader and
scan code to access this article
and other resources online.



Sexual Harassment in the Metaverse

Brenda K. Wiederhold, PhD, MBA, BCB, BCN

> [Environ Sci Technol](#). 2022 Apr 19;56(8):4721-4723. doi: 10.1021/acs.est.2c01562. Epub 2022 Apr 5.

Opportunities and Risks of the "Metaverse" For Biodiversity and the Environment

Matthias C Rillig^{1 2}, Kenneth A Gould³, Marcus Maeder^{4 5}, Shing Woong Kim^{1 2}, Juan F Dueñas^{1 2}, Liliana Pinek^{1 2}, Anika Lehmann^{1 2}, Milos Bielcik^{1 2}

Affiliations + expand

PMID: 35380430 DOI: [10.1021/acs.est.2](#)

The Dating Metaverse: Why We Need to Design for Consent in Social VR

Publisher: **IEEE**

[Cite This](#)

[PDF](#)

[Douglas Zytko](#); [Jonathan Chan](#) [All Authors](#)

[Inf Syst Front](#). 2023 Jun 2 : 1–44.

doi: [10.1007/s10796-023-10400-x](#) [Epub

Exploring the Darkverse: A Multi-Perspective Analysis of the Negative Societal Impacts of the Metaverse

[Yogesh K. Dwivedi](#),^{1,2} [Nir Kshetri](#),³ [Laurie Hughes](#),¹ [Nripendra P. Rana](#),⁴ [Abdullah M. Baabdullah](#),⁵ [Arpan Kumar Kar](#),^{6,7} [Alex Koohang](#),⁸ [Samuel Ribeiro-Navarrete](#),^{9,10} [Nina Belei](#),¹¹ [Janarthanan Balakrishnan](#),¹² [Sriparna Basu](#),¹³ [Abhishek Behl](#),¹⁴ [Gareth H. Davies](#),¹⁵ [Vincent Dutot](#),¹⁶ [Rohita Dwivedi](#),¹⁷ [Leighton Evans](#),¹⁸ [Reto Felix](#),¹⁹

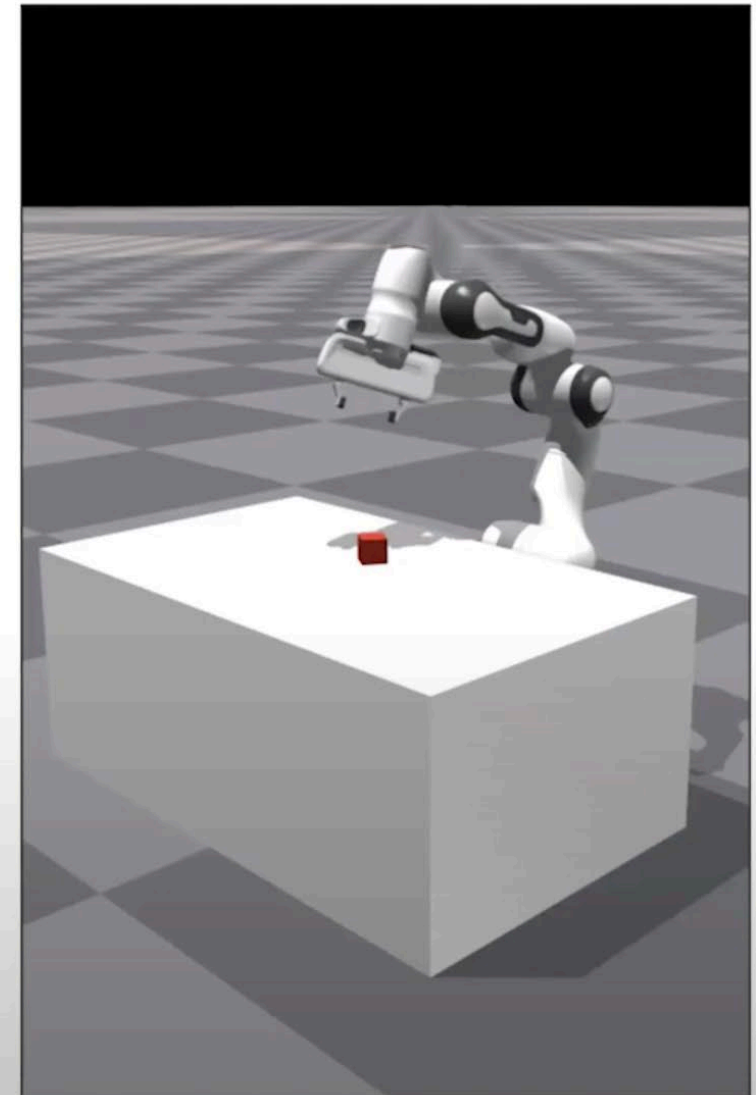
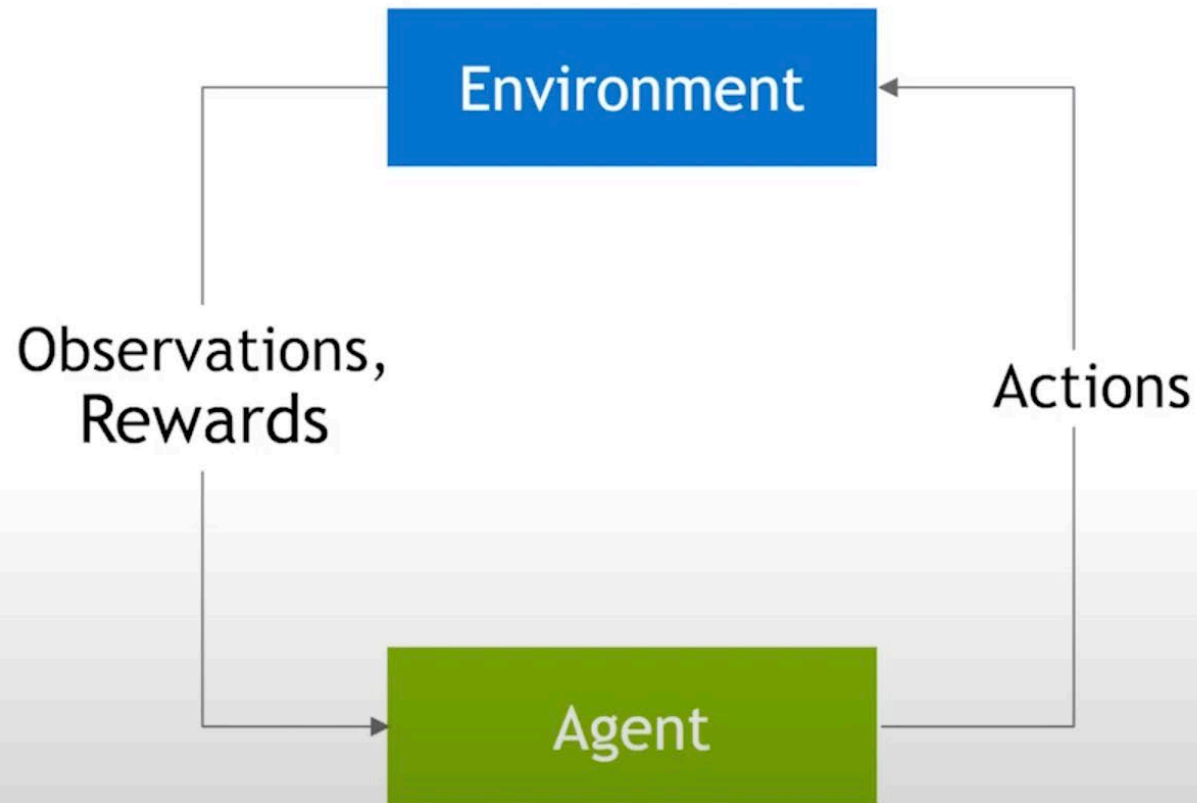




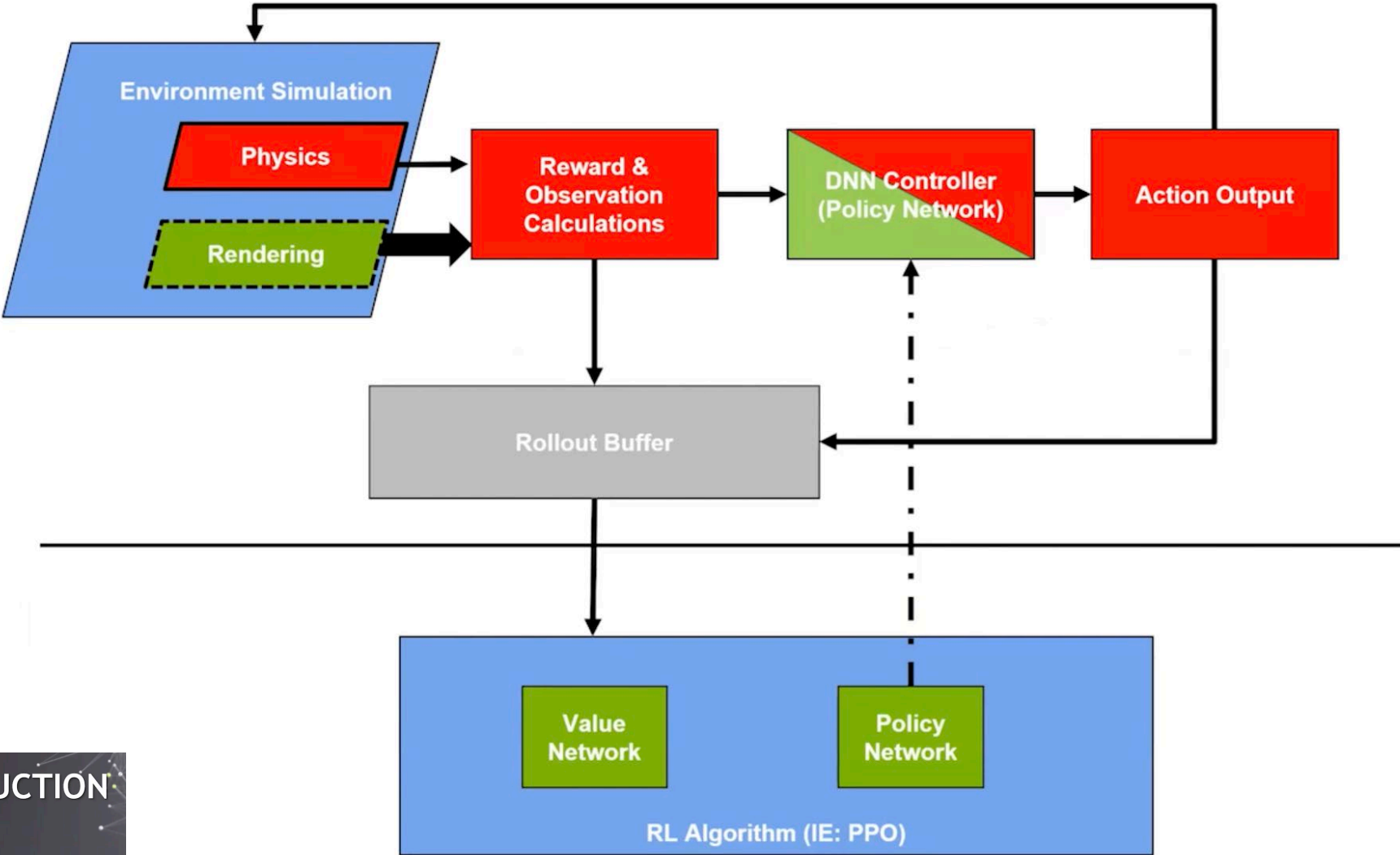
<https://www.youtube.com/@aiwarehouse>



REINFORCEMENT LEARNING



TYPICAL RL TODAY



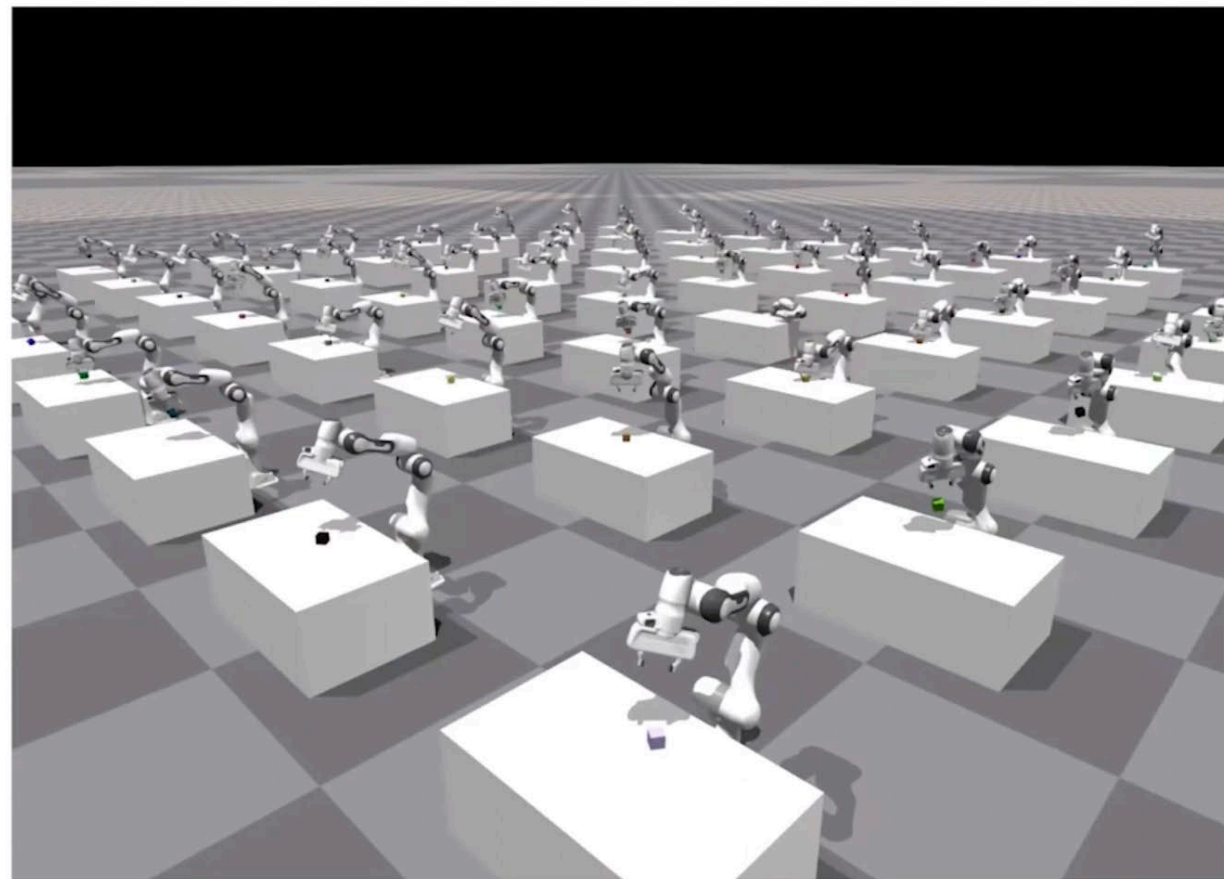
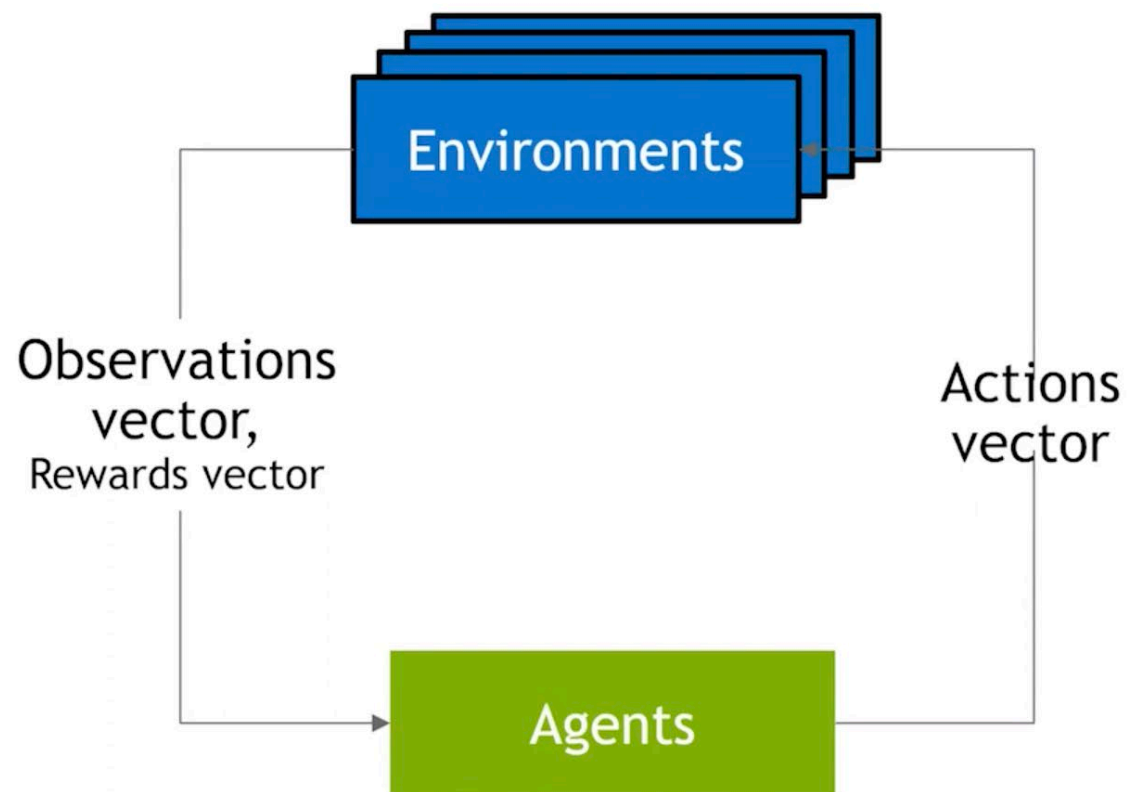
ISAAC GYM - INTRODUCTION

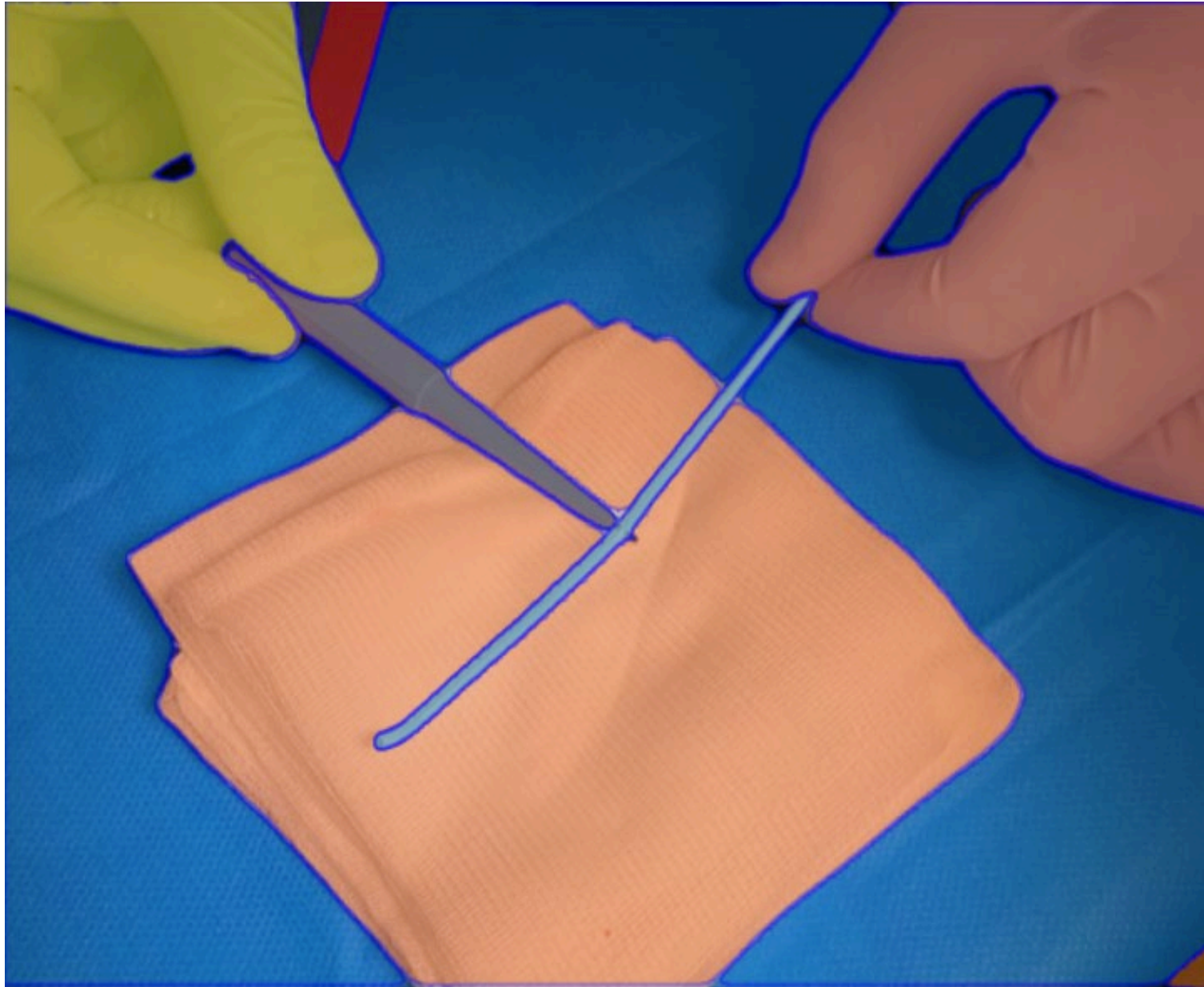
End to End GPU Accelerated Reinforcement Learning

Gavriel State

July 12, 2021 - Robotics: Science and Systems Workshop

PARALLEL SIMULATION ON GPU







FLASH BACK FIRE 2022

User What is unusual about this image?



Source: [Barnorama](#)

GPT-4 The unusual thing about this image is that a man is ironing clothes on an ironing board attached to the roof of a moving taxi.

User Can you explain this meme?

Sometimes I just look at pictures of the earth from space and I marvel at how beautiful it all is.



GPT-4 This meme is a joke that combines two unrelated things: pictures of the earth from space and chicken nuggets.

The text of the meme suggests that the image below is a beautiful picture of the earth from space. However, the image is actually of chicken nuggets arranged to vaguely resemble a map of the world.

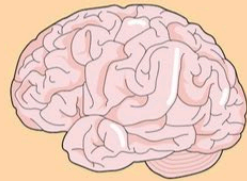
The humor in this meme comes from the unexpected juxtaposition of the text and the image. The text sets up an expectation of a majestic image of the earth, but the image is actually something mundane and silly.



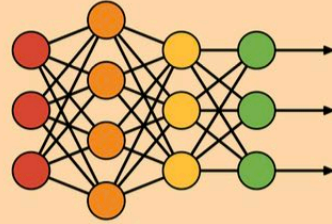
Action



Loops



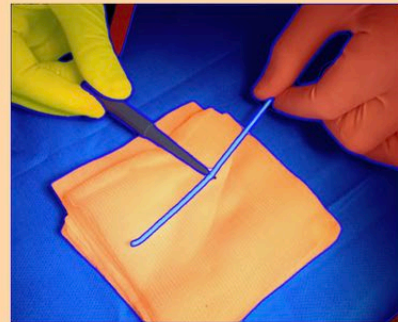
Decision process



Loops



Perception





Review

Computer-assisted needle trajectory planning and mathematical modeling for liver tumor thermal ablation: A review

Rui Zhang¹, Shuicai Wu¹, Weiwei Wu², Hongjian Gao¹ and Zhuhuang Zhou^{1,*}

¹ College of Life Science and Bioengineering, Beijing University of Technology, Beijing 100124, China

² College of Biomedical Engineering, Capital Medical University, Beijing 100069, China

* **Correspondence:** Email: zhouzh@bjut.edu.cn.

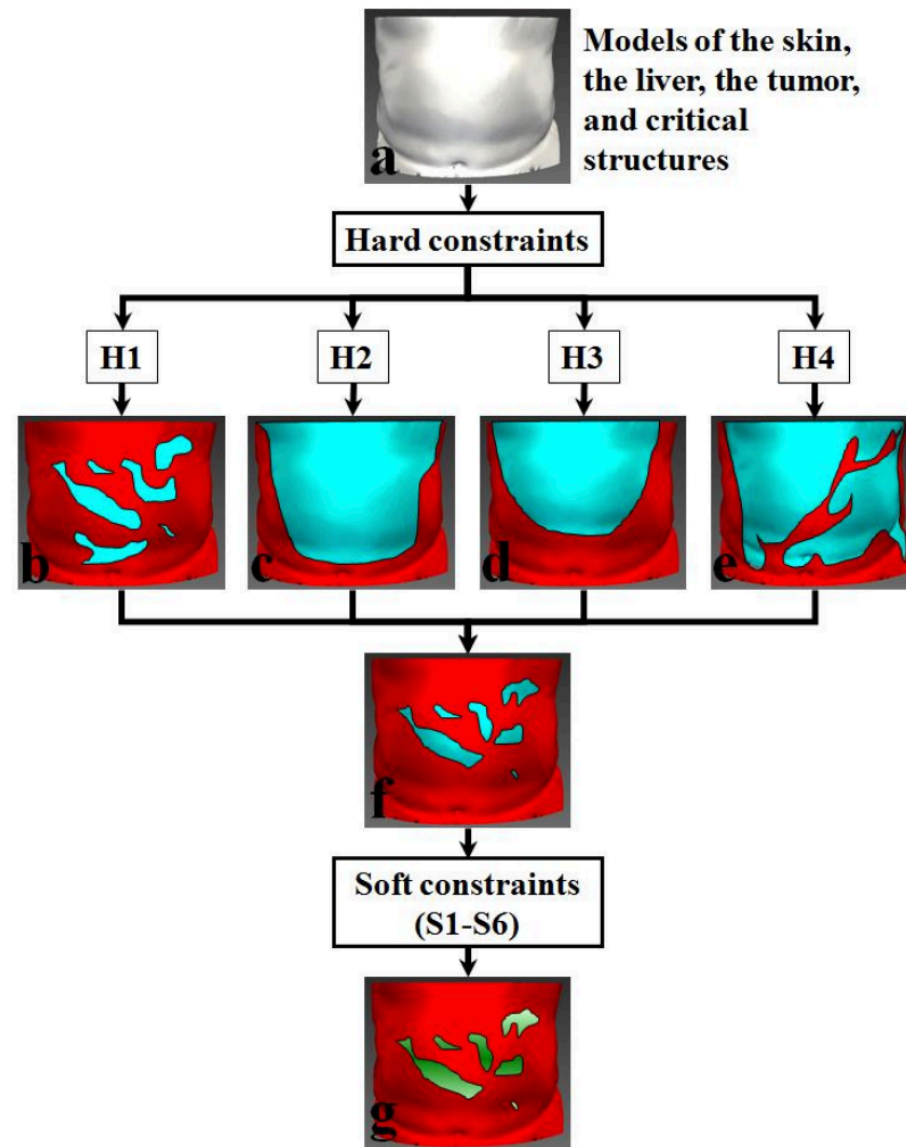


Figure 6. (a) Models of the skin, the liver, the tumor, and critical structures, obtained by segmentation and reconstruction. (b)–(e) Applicable insertion zones (light blue) and no-fly zones (red) on the skin, using hard constraints H1 (b), H2 (c), H3 (d), and H4 (e). (f) Combination of (b)–(e). (g) Combination and rating (green) of soft constraints S1–S6 on the basis of (f).

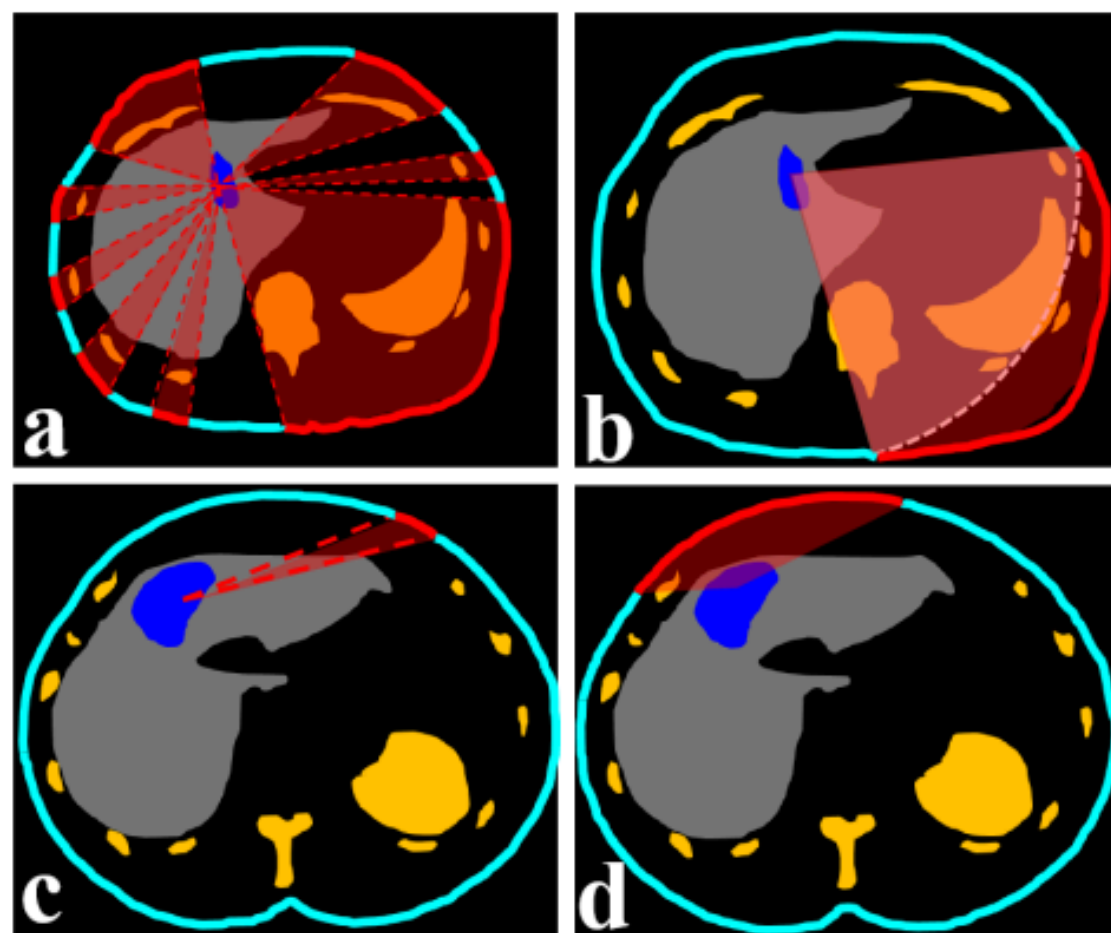


Figure 4. Illustration of applicable insertion zones (light blue) and no-fly zones (red) on the skin, using hard constraints H1 (a), H2 (b), H3 (c), and H4 (d). The skin, liver, liver tumor, and critical structures are depicted in light blue, gray, dark blue, and yellow, respectively.

Model-based hepatic percutaneous microwaveablation planning. First validation on a clinical dataset

Bruno Frackowiak (✉ bruno_frackowiak@hotmail.com)

Philips (Netherlands)

Vincent Van den Bosch

RWTH Aachen University

Zoi Tokoutsi

Philips (Netherlands)

Marco Baragona

Philips (Netherlands)

Martijn de Greef

Philips (Netherlands)

Aaldert Elevelt

Philips (Netherlands)

Peter Isfort

RWTH Aachen University

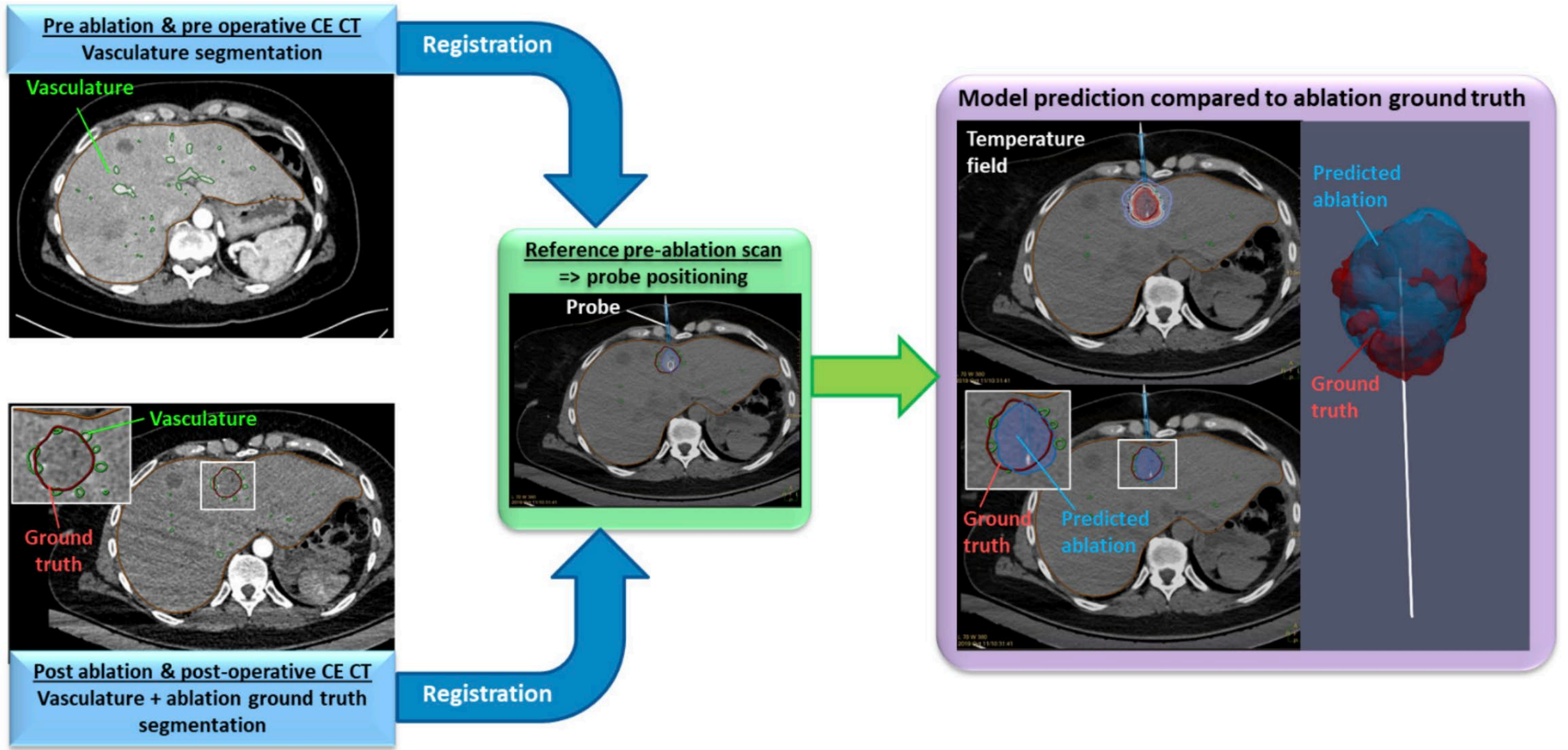


Figure 6. Retrospective analysis pipeline for the biophysical model validation.

Editorial

Where Robotic Surgery Meets the Metaverse

Fijs W. B. van Leeuwen ^{1,*} and Jos A. van der Hage ² 

¹ Interventional Molecular Imaging Laboratory, Department of Radiology, Leiden University Medical Center, 2300 RC Leiden, The Netherlands

² Department of Surgery, Leiden University Medical Center, 2300 RC Leiden, The Netherlands

* Correspondence: f.w.b.van_leeuwen@lumc.nl

Editorial

V

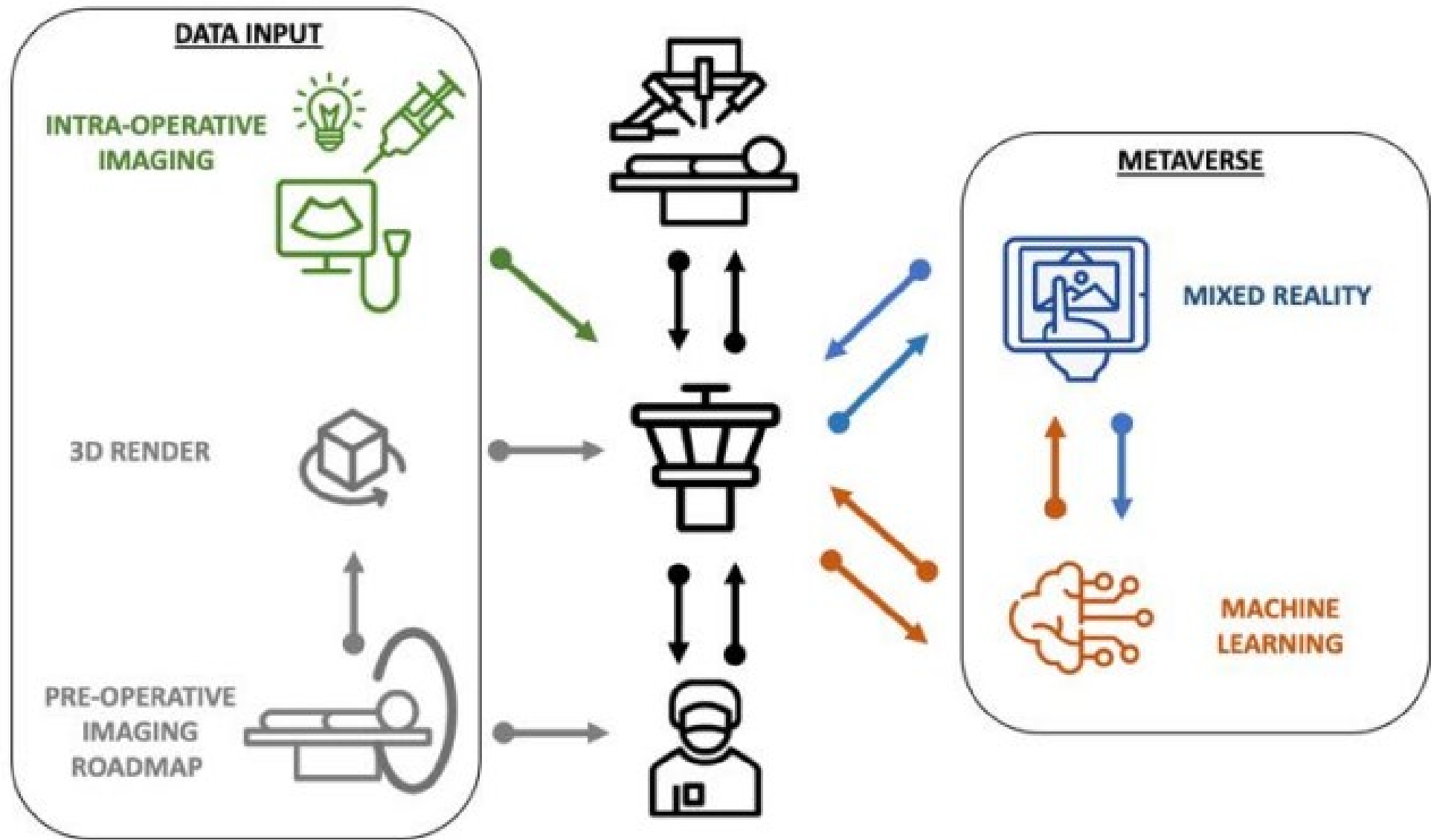
I

SURGICAL METAVERSE

‘OUR’ NAME????

er,

Correspondence: r.w.b.van_leeuwen@lumc.nl



INCLUSION

COLORECTAL
CANCER
METASTASIS



Next Generation Sequencing from plasma sample using
the Base-Position Error Rate method
29-genes targeted NGS panel including KRAS, NRAS,
BRAF, TP53, PIK3CA, CTNNB1, ERBB2

H0

H2

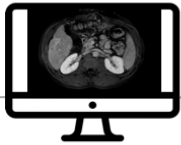
H24

D30

D60

D90

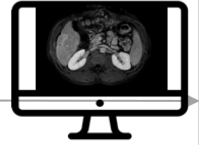
FLASH BACK FIRE 2022



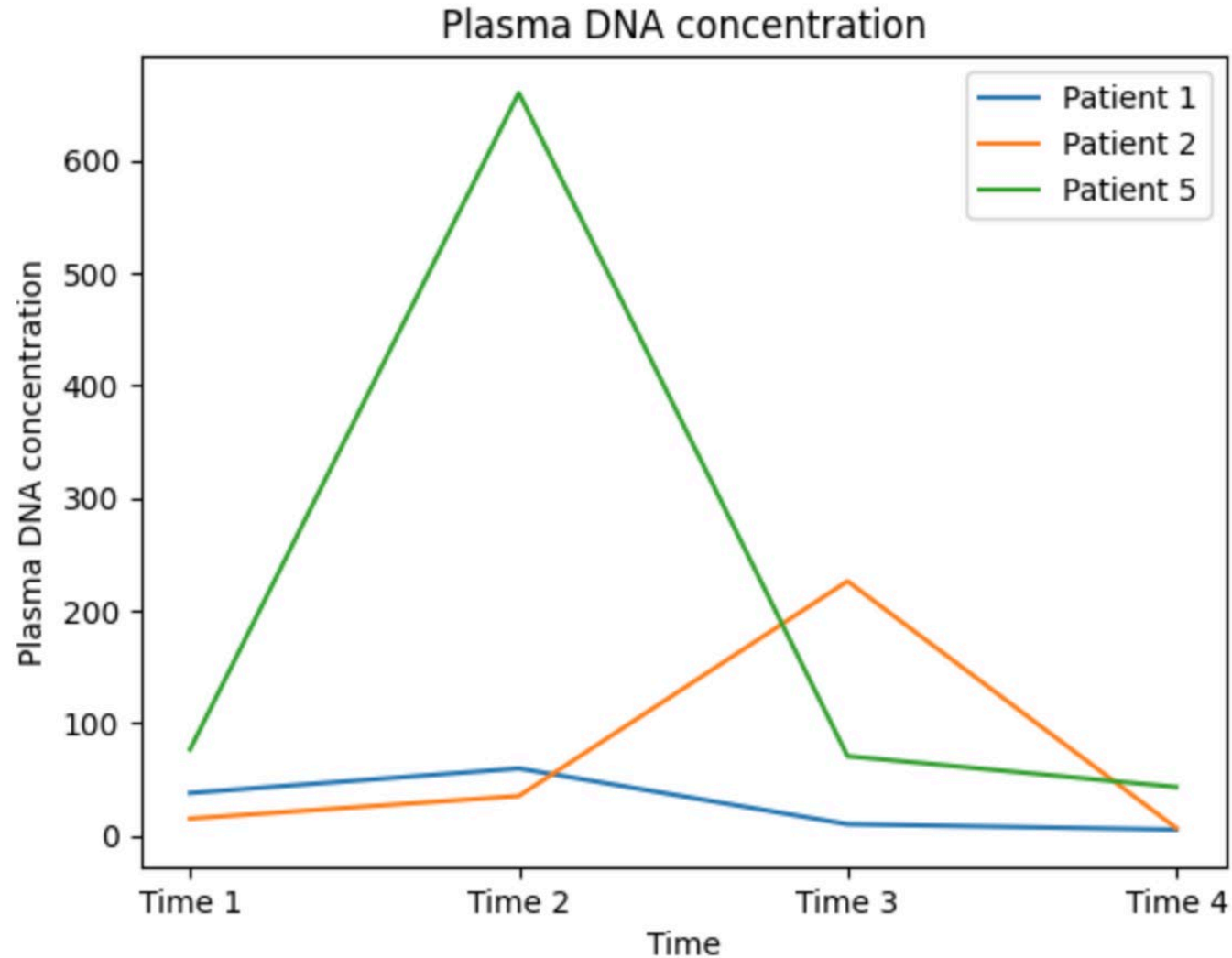
INTERVENTION

THERMAL
ABLATION

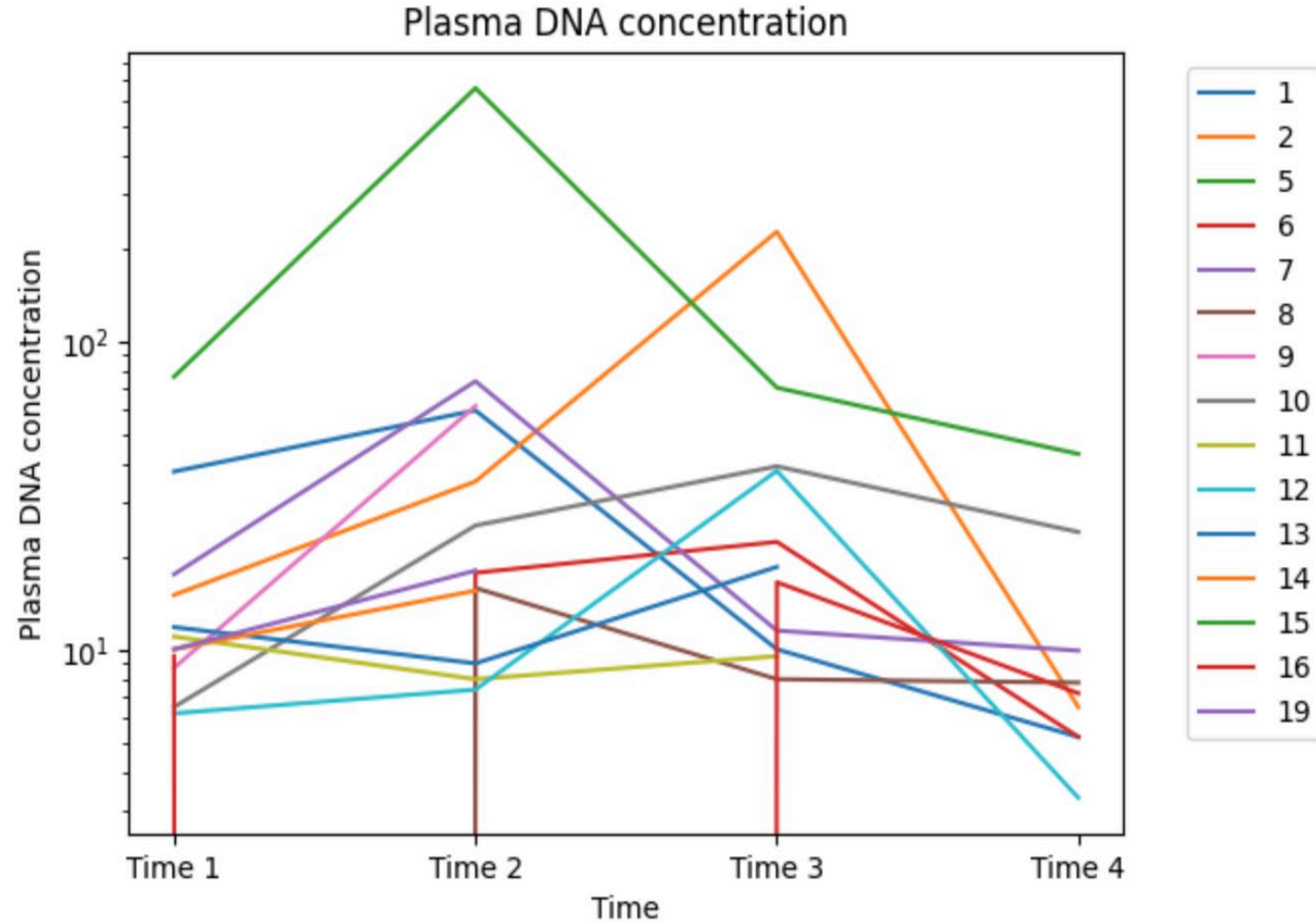
RADIOLOGICAL ASSESMENT



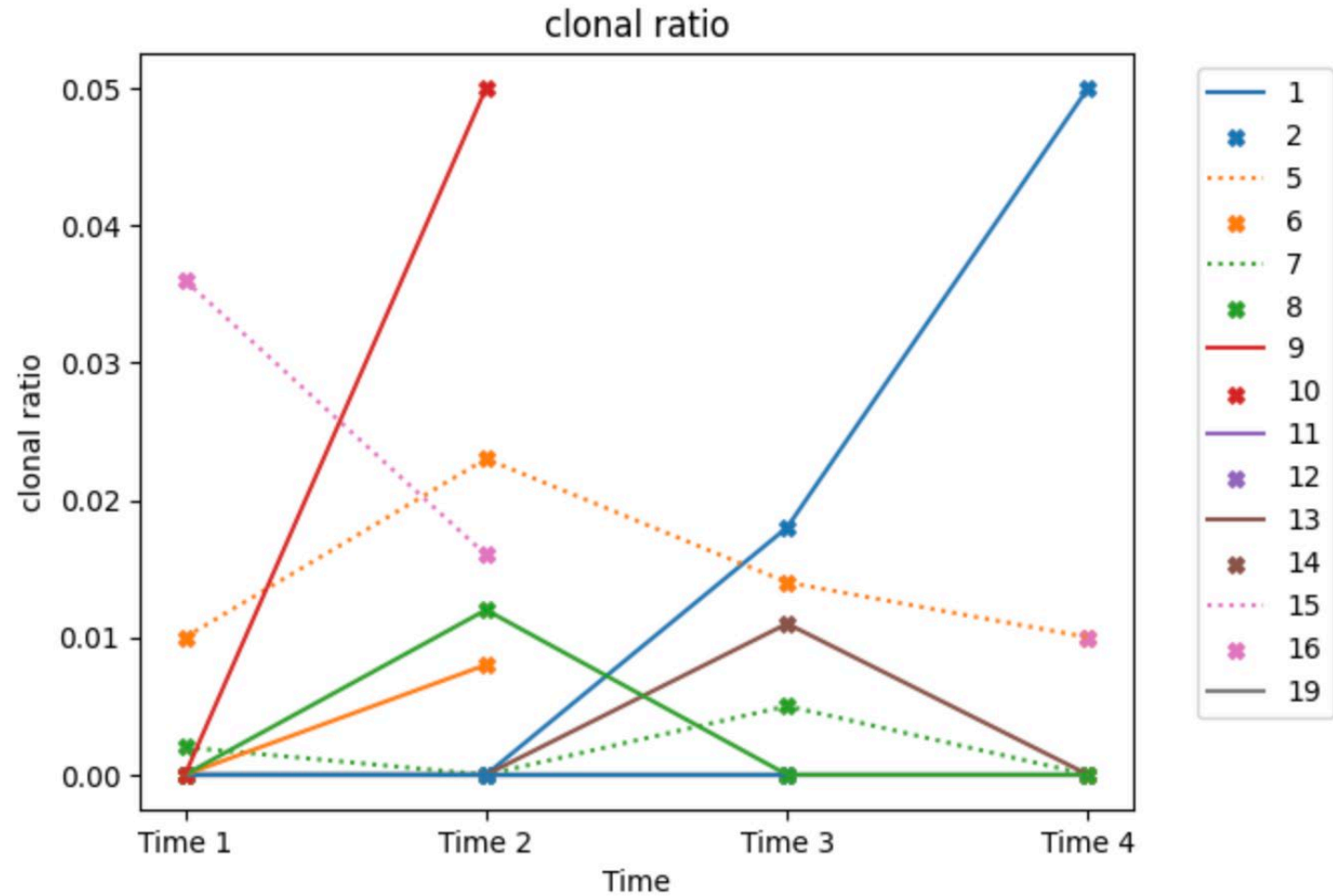
La recherche clinique en pratique



La recherche clinique en pratique



La recherche clinique en pratique



Fake news, vrais résultats

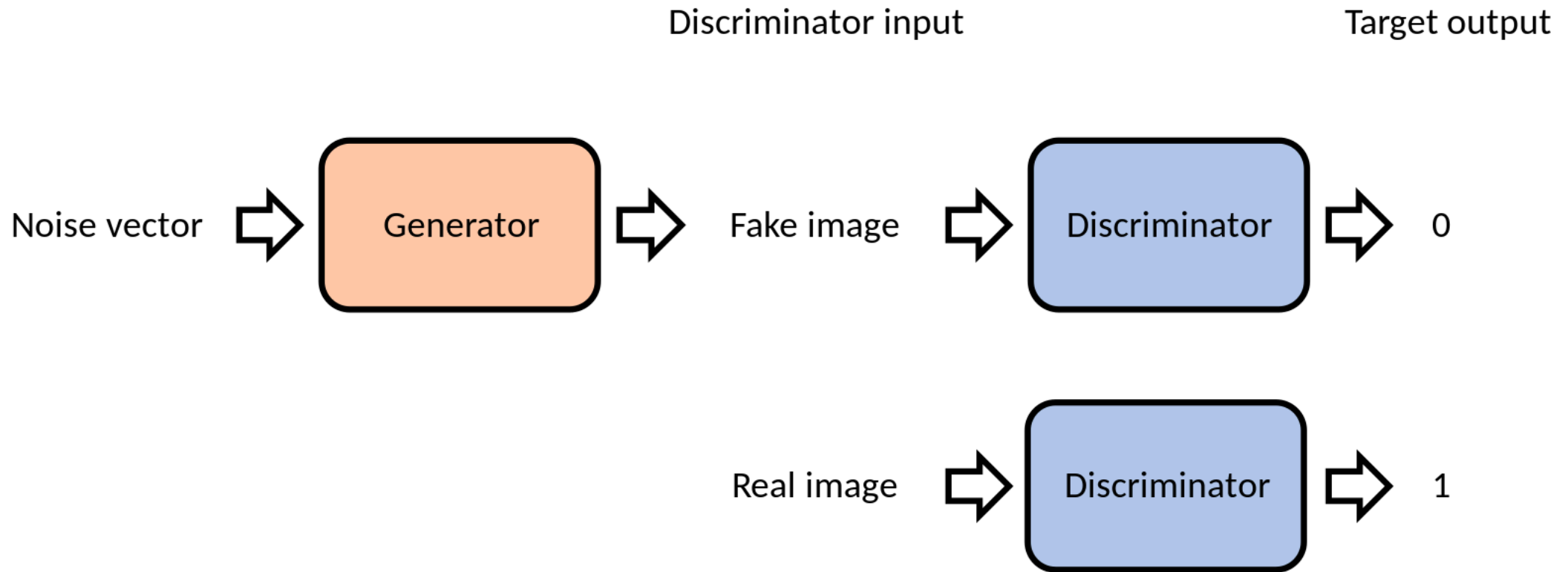
Generate

Generate

Generate

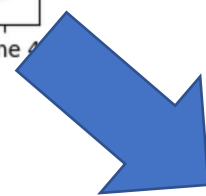
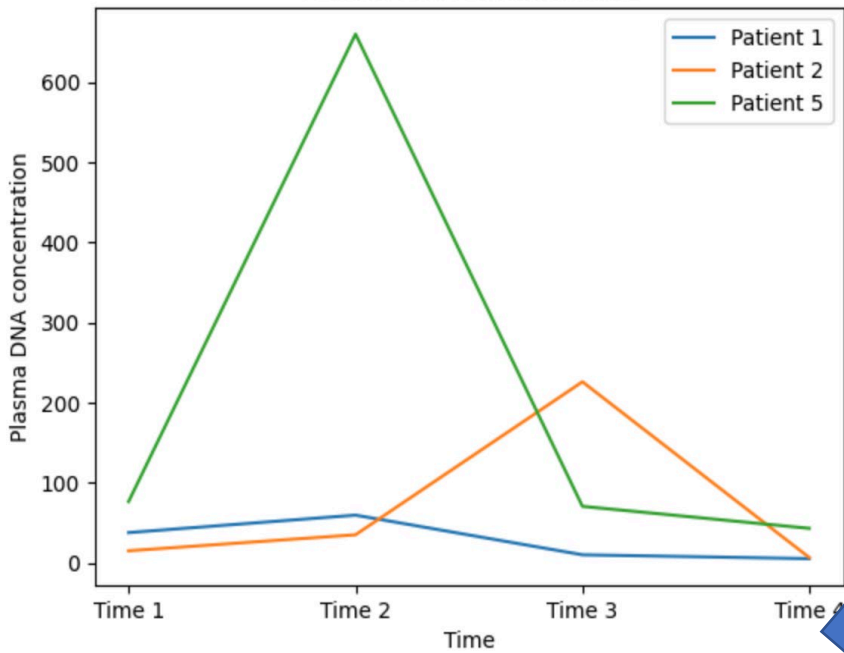
Generate

Fake news, vrais résultats

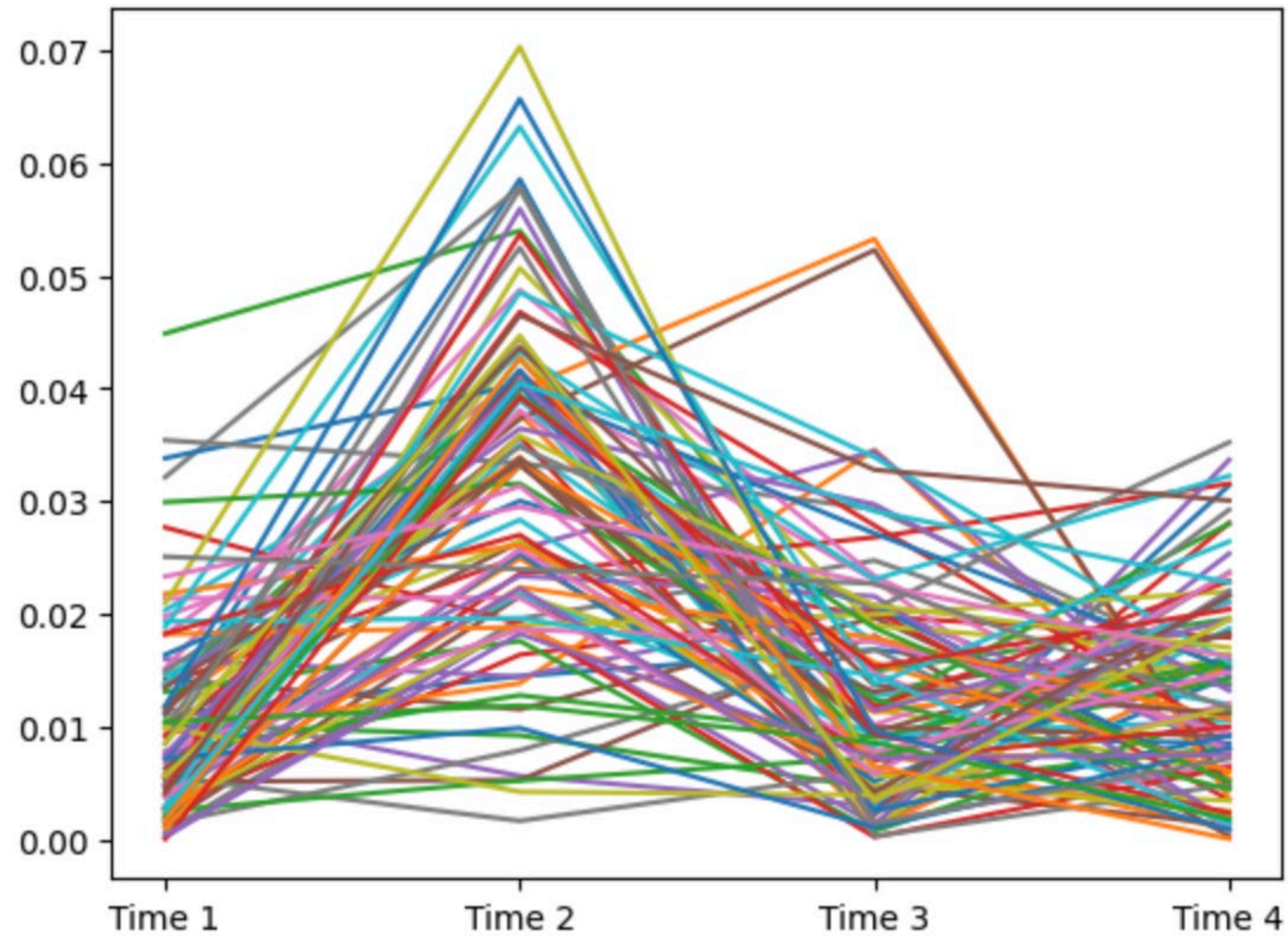


« the generator is not trained to minimize the distance to a specific image, but rather to **fool the discriminator**. »

Plasma DNA concentration



Fake Data For Clonal Ratio



Merci!